



# BREAK AWAY FROM MIGRAINE

**VYEPTI may reduce your monthly migraine days beginning with the very first treatment. You may even be migraine-free during the first seven days, and AS SOON AS DAY ONE.**

## APPROVED USE

VYEPTI is a prescription medicine used for the preventive treatment of migraine in adults.

## IMPORTANT SAFETY INFORMATION

**Do not receive VYEPTI** if you have a known allergy to eptinezumab-jjmr or its ingredients. See the end of the accompanying Patient Information leaflet for a complete list of ingredients in VYEPTI.

**Please see additional Important Safety Information throughout this document.**

**For more information, see the accompanying Full Prescribing Information, including Patient Information, at the end of this brochure.**





#### **IMPORTANT SAFETY INFORMATION (continued)**

**VYEPTI may cause allergic reactions.** Call your healthcare provider or get emergency medical help right away if you have any symptoms of an allergic reaction: rash; swelling of your face, lips, tongue, or throat; if you have trouble breathing; hives; or redness in your face.

**Please see additional Important Safety Information throughout this document.**

**For more information, see the accompanying Full Prescribing Information, including Patient Information, at the end of this brochure.**

## **STILL LIVING WITH MIGRAINE?**

Migraine is more than just a bad headache. It can come on at any time—sometimes for what seems like no reason at all.

Symptoms can vary from person to person, but migraine is unpredictable and can be debilitating. There is also the added stress of never knowing when, where or how it will upend your plans.

If you are still experiencing migraine, VYEPTI may be right for you. VYEPTI is an intravenous (IV) treatment designed to help stop migraine headaches before they occur.

  
(eptinezumab-jjmr)  
100 mg/mL Injection for IV

## PROVEN TO REDUCE MONTHLY MIGRAINE DAYS BEGINNING WITH THE VERY FIRST IV TREATMENT

VYEPTI 100 mg reduced average monthly migraine days by 45% over Months 1 through 3, compared to 33% with placebo.

VYEPTI 100 mg every 3 months is the recommended dose. However, your doctor could decide that you may benefit from a 300 mg dose.

Information is based on a 12-month clinical study of adults with 4-14 headache days per month.



### IMPORTANT SAFETY INFORMATION (continued)

**Before starting VYEPTI**, tell your healthcare provider about all your medical conditions, including if you are pregnant or plan to become pregnant, or you are breastfeeding or plan to breastfeed.

**Tell your healthcare provider** about all the medicines you take, including any prescription and over-the-counter medicines, vitamins, or herbal supplements.

**Please see additional Important Safety Information throughout this document.**

**For more information, see the accompanying Full Prescribing Information, including Patient Information, at the end of this brochure.**



# BREAK AWAY FROM MIGRAINE WITH VYEPTI

VYEPTI is a preventive treatment designed to help stop migraine headaches before they occur, which could help reduce concerns that the next attack might be waiting right around the corner.

## IMPORTANT SAFETY INFORMATION (continued)

**The most common side effects** of VYEPTI include stuffy nose and scratchy throat, and allergic reactions.

These are not all the possible side effects of VYEPTI. Tell your healthcare provider if you have any side effect that bothers you or that does not go away.

**Please see additional Important Safety Information throughout this document.**

**For more information, see the accompanying Full Prescribing Information, including Patient Information, at the end of this brochure.**



**vyepti**<sup>®</sup>  
(eptinezumab-jjmr)  
100 mg/mL Injection for IV

# HOW VYEPTI WORKS

**VYEPTI is designed to work fast. After each 30-minute infusion, 100% of the medication is available in the bloodstream.**

- ① Inside the brain, there is a protein called CGRP, which stands for calcitonin gene-related peptide.
- ② CGRP attaches to CGRP receptors and activates them, which is thought to play a large role in causing migraine.
- ③ VYEPTI binds to CGRP, preventing it from activating CGRP receptors.

The relationship between your body's response to the medication and the way VYEPTI prevents migraine is unknown.

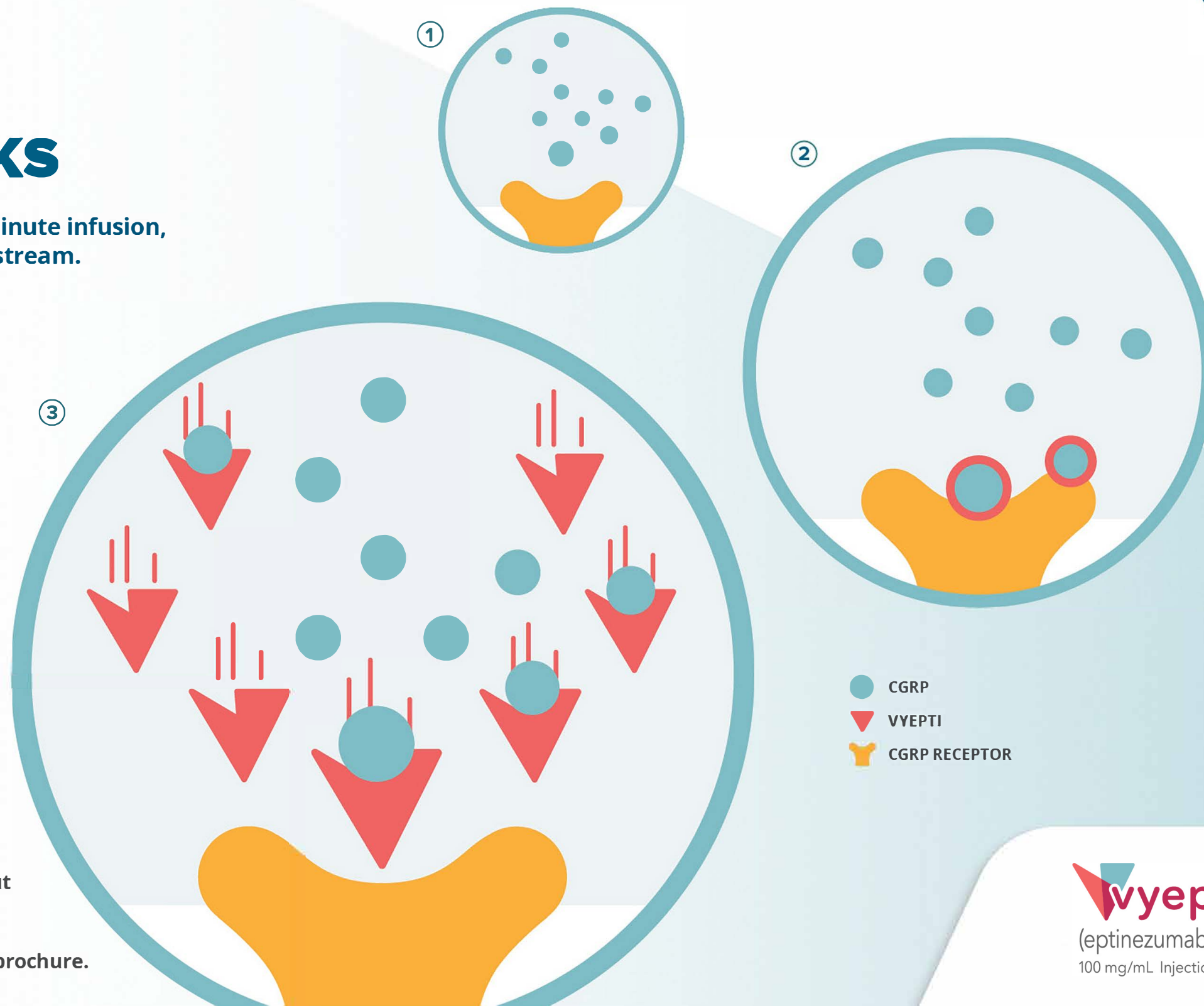
## IMPORTANT SAFETY INFORMATION (continued)

**The most common side effects** of VYEPTI include stuffy nose and scratchy throat, and allergic reactions.

These are not all the possible side effects of VYEPTI. Tell your healthcare provider if you have any side effect that bothers you or that does not go away.

**Please see additional Important Safety Information throughout this document.**

**For more information, see the accompanying Full Prescribing Information, including Patient Information, at the end of this brochure.**





# BREAK AWAY FROM MIGRAINE FAST

More people were migraine-free during a seven-day span following their first infusion with VYEPTI compared to placebo, most **as soon as Day One.**

On **Day One**, there was a 52% reduction in the number of people experiencing a migraine, compared to 25% with placebo.

Information is based on a 12-month clinical study of adults with 4-14 headache days per month.

## IMPORTANT SAFETY INFORMATION (continued)

You are encouraged to report negative side effects of prescription drugs to the FDA. Visit [www.fda.gov/medwatch](http://www.fda.gov/medwatch) or call 1-800-FDA-1088.

Please see additional Important Safety Information throughout this document.

For more information, see the accompanying Full Prescribing Information, including Patient Information, at the end of this brochure.

**vyepi**<sup>®</sup>  
(eptinezumab-jjmr)  
100 mg/mL Injection for IV

# BREAK AWAY WITH POWERFUL MIGRAINE PREVENTION

Information is based on a 12-month clinical study of adults with 4-14 headache days per month.

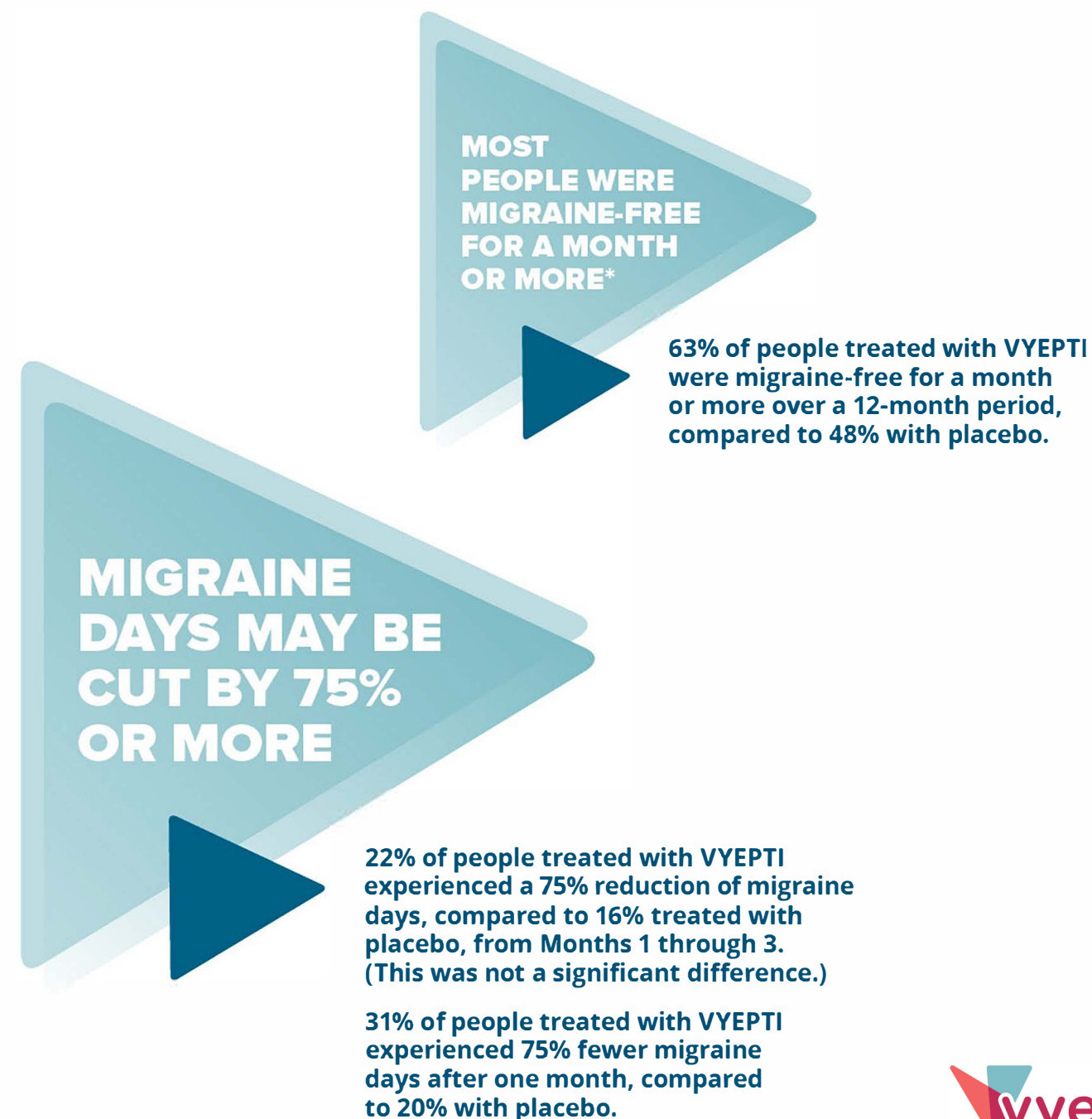
\* A migraine-free month was defined as a consecutive 28-day period in which the patient experienced no migraine.

## IMPORTANT SAFETY INFORMATION (continued)

**Do not receive VYEPTI** if you have a known allergy to eptinezumab-jjmr or its ingredients.

**Please see additional Important Safety Information throughout this document.**

**For more information, see the accompanying Full Prescribing Information, including Patient Information, at the end of this brochure.**





# BREAK AWAY WITH LASTING MIGRAINE PREVENTION

**VYEPTI provided  
a treatment benefit  
that lasted through  
Month 6, compared  
to placebo.**

**Patients received  
2 doses of VYEPTI.**

Information is based on a 12-month clinical study  
of adults with 4-14 headache days per month.

## IMPORTANT SAFETY INFORMATION (continued)

**VYEPTI may cause allergic reactions.** Call your healthcare provider or get emergency medical help right away if you have any symptoms of an allergic reaction: rash; swelling of your face, lips, tongue, or throat; if you have trouble breathing; hives; or redness in your face.

**Please see additional Important Safety Information throughout this document.**

**For more information, see the accompanying Full Prescribing Information, including Patient Information, at the end of this brochure.**



**vyepti**<sup>®</sup>  
(eptinezumab-jjmr)  
100 mg/mL Injection for IV



# BREAK AWAY WITH WELL-TOLERATED MIGRAINE PREVENTION

## IN TWO CLINICAL TRIALS OF APPROXIMATELY 1,700 PEOPLE WITH MIGRAINE:

- ▶ 6% of people treated with VYEPTI 100 mg, and 8% treated with VYEPTI 300 mg, experienced a stuffy nose and scratchy throat, compared to 6% treated with placebo.
- ▶ 1% of people treated with VYEPTI 100 mg, and 2% treated with VYEPTI 300 mg, experienced allergic reactions, compared to 0% treated with placebo.

Notify your healthcare provider if you become pregnant or plan to become pregnant.

### IMPORTANT SAFETY INFORMATION (continued)

**VYEPTI may cause allergic reactions.** Call your healthcare provider or get emergency medical help right away if you have any symptoms of an allergic reaction: rash; swelling of your face, lips, tongue, or throat; if you have trouble breathing; hives; or redness in your face.

**Please see additional Important Safety Information throughout this document.**

**For more information, see the accompanying Full Prescribing Information, including Patient Information, at the end of this brochure.**



1.9% discontinued VYEPTI due to side effects.



# BREAK AWAY WITH 4 IV TREATMENTS PER YEAR



One 30-minute  
IV treatment



4 times per year  
(every 3 months)



Given by a healthcare  
professional in  
a clinical setting

VYEPTI may not be right for everyone.  
Ask your healthcare provider if they think you would benefit from VYEPTI treatment.

## IMPORTANT SAFETY INFORMATION (continued)

**Before starting VYEPTI**, tell your healthcare provider about all your medical conditions, including if you are pregnant or plan to become pregnant, or you are breastfeeding or plan to breastfeed.

**Tell your healthcare provider** about all the medicines you take, including any prescription and over-the-counter medicines, vitamins, or herbal supplements.

**Please see additional Important Safety Information** throughout this document.

**For more information, see the accompanying Full Prescribing Information, including Patient Information, at the end of this brochure.**

  
(eptinezumab-jjmr)  
100 mg/mL Injection for IV



# ASK YOUR DOCTOR ABOUT VYEPTI TODAY

- ▶ Is VYEPTI something that might be right for me?
- ▶ What can I expect with an IV treatment?
- ▶ How quickly will VYEPTI start working?
- ▶ What results can I expect with VYEPTI?
- ▶ What side effects might I experience with VYEPTI?
- ▶ Where would I need to go to get my IV treatment?
- ▶ Would I need to stop my other medication before starting VYEPTI?  
(Always let your healthcare provider know about any other medications you may be taking.)
- ▶ Is there anything I should know to prepare for my first IV treatment?
- ▶ Is there a support program available for VYEPTI?



**Be sure to let your doctor know how many days per month you experience migraine or migraine symptoms, and how it impacts your life.**

## IMPORTANT SAFETY INFORMATION (continued)

**The most common side effects** of VYEPTI include stuffy nose and scratchy throat, and allergic reactions.

These are not all the possible side effects of VYEPTI. Tell your healthcare provider if you have any side effect that bothers you or that does not go away.

**Please see additional Important Safety Information throughout this document.**

**For more information, see the accompanying Full Prescribing Information, including Patient Information, at the end of this brochure.**



**vyepti**<sup>®</sup>  
(eptinezumab-jjmr)  
100 mg/mL Injection for IV



# BREAK AWAY WITH TREATMENT SUPPORT\*

VYEPTI GO is a personalized patient support program designed to assist you during your VYEPTI treatment journey.

## WITH VYEPTI GO, YOU'LL HAVE ACCESS TO:

- ▶ Patient Navigators available by phone 6 days per week to answer questions and direct you to helpful resources, such as the VYEPTI Copay Assistance Program for commercial patients.\*
- ▶ A registered nurse available by phone to help you better understand migraine, and provide treatment tips and VYEPTI education.
- ▶ Text and email communications to assist you with appointment scheduling and reminders.



Get all the details at [vyepti.com](https://vyepti.com) or call 1-833-4-VYEPTI (1-833-489-3784), and press option 2 for VYEPTI GO.

\* Terms and conditions apply. Visit [vyepti.com](https://vyepti.com) to learn more.

### IMPORTANT SAFETY INFORMATION (continued)

You are encouraged to report negative side effects of prescription drugs to the FDA. Visit [www.fda.gov/medwatch](https://www.fda.gov/medwatch) or call 1-800-FDA-1088.

Please see additional Important Safety Information throughout this document.

For more information, see the accompanying Full Prescribing Information, including Patient Information, at the end of this brochure.

**vyepti**<sup>®</sup>  
(eptinezumab-jjmr)  
100 mg/mL Injection for IV





## IV TREATMENT TIPS

### BEFORE THE IV TREATMENT



- Drink plenty of water leading up to your IV treatment. Being well hydrated will make your veins more accessible.



- Prepare for your treatment the night before. Put what you need for your appointment into a bag so you can just grab it on your way out the door.

### DAY OF THE IV TREATMENT

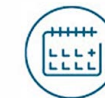


- Dress comfortably: sleeves should be loose enough to roll up above your elbows, and some clinics might be chilly!



- Do something you enjoy during your 30-minute treatment, like reading a good book or filling in a crossword puzzle.

### AFTER THE IV TREATMENT



- Make sure to ask for your next appointment date before you leave the clinic!



If you have any questions about appointment scheduling, call your healthcare provider.

#### IMPORTANT SAFETY INFORMATION (continued)

Do not receive VYEPTI if you have a known allergy to eptinezumab-jjmr or its ingredients.

Please see additional Important Safety Information throughout this document.

For more information, see the accompanying Full Prescribing Information, including Patient Information, at the end of this brochure.

# FREQUENTLY ASKED QUESTIONS

## ABOUT VYEPTI

### Why is VYEPTI given as an IV treatment?

VYEPTI was designed to be given as an IV treatment so 100% of the medication would be available in the bloodstream to quickly start working.

### How is migraine prevention with VYEPTI different from other treatments?

VYEPTI has been proven to start working as early as the very first day after treatment.

### Should I stop my current migraine treatment before starting VYEPTI?

Always talk to your doctor before stopping any medication.

## ABOUT MY VYEPTI APPOINTMENT

### How long will my VYEPTI treatment take?

VYEPTI is given as a 30-minute IV treatment every 3 months, but the amount of time spent for preparation and monitoring may vary.

### What should I do if I have migraine the day of my treatment?

If you have a migraine the day of your IV treatment, talk to your healthcare provider.

### What are the most common side effects of VYEPTI?

The most common side effects of VYEPTI include stuffy nose and scratchy throat, and allergic reactions. These are not all the possible side effects of VYEPTI. Tell your healthcare provider if you have any side effect that bothers you or that does not go away.

## ABOUT VYEPTI COMMERCIAL COPAY ASSISTANCE

### What is commercial copay assistance?

Through the VYEPTI Copay Assistance Program,\* eligible commercial patients can get a portion of the cost of treatment paid for by Lundbeck.

### How do I find out if I qualify for the VYEPTI Copay Assistance Program?\*

Please visit [vyepti.com](http://vyepti.com) or call 1-833-4-VYEPTI (1-833-489-3784) to find out if you're eligible.

\* Terms and conditions apply.

## IMPORTANT SAFETY INFORMATION (continued)

**VYEPTI may cause allergic reactions.** Call your healthcare provider or get emergency medical help right away if you have any symptoms of an allergic reaction: rash; swelling of your face, lips, tongue, or throat; if you have trouble breathing; hives; or redness in your face.

**Please see additional Important Safety Information throughout this document.**

**For more information, see the accompanying Full Prescribing Information, including Patient Information, at the end of this brochure.**







# READY TO MAKE YOUR BREAK FROM MIGRAINE?

ASK YOUR DOCTOR ABOUT VYEPTI TODAY



Given by your healthcare provider  
as a 30-minute IV treatment 4 times  
per year (every 3 months)



**Treatment support is available  
at [vyepti.com](https://vyepti.com)**

If you have any questions about VYEPTI,  
call us at 1-833-4-VYEPTI (1-833-489-3784)

Please see Important Safety Information throughout this document.

For more information, see the accompanying Full Prescribing Information, including Patient Information, at the end of this brochure.

**References:** 1. VYEPTI Prescribing Information, Lundbeck Seattle BioPharmaceuticals, Inc. 2. VYEPTI Patient Information, Lundbeck Seattle BioPharmaceuticals, Inc. 3. Burstein R, *et al.* Migraine: multiple processes, complex pathophysiology. *J Neurosci* 2015;35(17):6619-29. 4. Dodick DW, *et al.* Eptinezumab for prevention of chronic migraine: a randomized phase 2b clinical trial. *Cephalalgia* 2019;39(9):1075-85. 5. Ho T, *et al.* CGRP and its receptors provide new insights into migraine pathophysiology. *Nat Rev Neurol* 2010;6(10):573-82. 6. Silberstein S, *et al.* Eptinezumab results for the prevention of episodic migraine over 1 year in the PROMISE-1 (Prevention of Migraine via Intravenous Eptinezumab Safety and Efficacy-1) trial. Presented at: American Headache Society (AHS) 60<sup>th</sup> Annual Scientific Meeting: San Francisco, CA; June 28-July 1, 2018. PF108LB. 7. Data on File, Lundbeck Seattle BioPharmaceuticals, Inc. 8. Saper J, *et al.* Eptinezumab for the prevention of episodic migraine through 1 year: results from the phase 3 PROMISE-1 (Prevention of Migraine via Intravenous Eptinezumab Safety and Efficacy-1) trial. Presented at: 2019 American Academy of Neurology Annual Meeting: Philadelphia, PA; May 4-10, 2019. S38.003. 9. Winner P, *et al.* Migraine-free months in patients with episodic or chronic migraine treated with eptinezumab: results from the PROMISE-1 and PROMISE-2 trials. Presented at: American Headache Society (AHS) 61<sup>st</sup> Annual Scientific Meeting: Philadelphia, PA; July 11-14, 2019. P217LB. 10. National Infusion Center Association. How to Prepare for Your Infusion. Available at: <https://infusioncenter.org/how-to-prepare-for-your-infusion/>. Accessed October 17, 2019.

©2021 Lundbeck. All rights reserved.

VYEPTI and VYEPTI GO are registered trademarks of Lundbeck Seattle BioPharmaceuticals, Inc. EPT-B-100182v2





**HIGHLIGHTS OF PRESCRIBING INFORMATION**  
These highlights do not include all the information needed to use VYEPTI safely and effectively. See full prescribing information for VYEPTI.

**VYEPTI® (eptinezumab-ijmr) injection, for intravenous use**  
**Initial U.S. Approval: 2020**

- RECENT MAJOR CHANGES
- Contraindications (4)

Warnings and Precautions (5.1)

09/2021

09/2021

**INDICATIONS AND USAGE**  
VYEPTI is a calcitonin gene-related peptide antagonist indicated for the preventive treatment of migraine in adults (1)

- DOSAGE AND ADMINISTRATION
- Must dilute before use. For intravenous infusion only (2.1, 2.2)

Recommended dosage is 100 mg as an intravenous infusion over approximately 30 minutes every 3 months. Some patients may benefit from a dosage of 300 mg (2.1, 2.3)

Dilute only in 100 mL of 0.9% Sodium Chloride Injection, USP (2.2)

FULL PRESCRIBING INFORMATION: CONTENTS\*

- 1 INDICATIONS AND USAGE
- 2 DOSAGE AND ADMINISTRATION

2.1 Recommended Dosing

2.2 Dilution Instructions

2.3 Infusion Administration Instructions
- 3 DOSAGE FORMS AND STRENGTHS
- 4 CONTRAINDICATIONS
- 5 WARNINGS AND PRECAUTIONS

5.1 Hypersensitivity Reactions
- 6 ADVERSE REACTIONS

6.1 Clinical Trials Experience

6.2 Immunogenicity

6.3 Postmarketing Experience
- 8 USE IN SPECIFIC POPULATIONS

8.1 Pregnancy

**DOSAGE FORMS AND STRENGTHS**  
Injection: 100 mg/mL solution in a single-dose vial (3)

**CONTRAINDICATIONS**  
VYEPTI is contraindicated in patients with serious hypersensitivity to eptinezumab-ijmr or to any of the excipients (4)

**WARNINGS AND PRECAUTIONS**  
Hypersensitivity Reactions: If a hypersensitivity reaction occurs, consider discontinuing VYEPTI and initiate appropriate therapy (5.1)

**ADVERSE REACTIONS**  
The most common adverse reactions (≥2% and 2% or greater than placebo) were nasopharyngitis and hypersensitivity (6.1)  
**To report SUSPECTED ADVERSE REACTIONS, contact Lundbeck at 1-800-455-1141 or FDA at 1-800-FDA-1088 or [www.fda.gov/medwatch](http://www.fda.gov/medwatch).**

**See 17 for PATIENT COUNSELING INFORMATION and FDA-approved patient labeling.**  
**Revised: 09/2021**

- 8.2 Lactation
- 8.4 Pediatric Use
- 8.5 Geriatric Use
- 11 DESCRIPTION
- 12 CLINICAL PHARMACOLOGY

12.1 Mechanism of Action

12.2 Pharmacodynamics

12.3 Pharmacokinetics
- 13 NONCLINICAL TOXICOLOGY

13.1 Carcinogenesis, Mutagenesis, Impairment of Fertility
- 14 CLINICAL STUDIES
- 16 HOW SUPPLIED/STORAGE AND HANDLING

16.1 How Supplied

16.2 Storage and Handling
- 17 PATIENT COUNSELING INFORMATION

\*Sections or subsections omitted from the full prescribing information are not listed.

FULL PRESCRIBING INFORMATION

**1 INDICATIONS AND USAGE**  
VYEPTI is indicated for the preventive treatment of migraine in adults.

**2 DOSAGE AND ADMINISTRATION**  
**2.1 Recommended Dosing**  
The recommended dosage is 100 mg administered by intravenous infusion every 3 months. Some patients may benefit from a dosage of 300 mg administered by intravenous infusion every 3 months.

**2.2 Dilution Instructions**  
VYEPTI requires dilution prior to administration. Dilute only in 100 mL 0.9% Sodium Chloride Injection, USP. The infusion bags must be made of polyvinyl chloride (PVC), polyethylene (PE), or polyolefin (PO). Use appropriate aseptic technique when preparing VYEPTI solution for intravenous infusion. VYEPTI single-dose vials contain no preservative; discard unused portion remaining in the vial.

Dilution  
**100 mg dose:**  
To prepare the solution, withdraw 1 mL of VYEPTI from a single-dose vial using a sterile needle and syringe. Inject the 1 mL content into a 100 mL bag of 0.9% Sodium Chloride Injection, USP.

**300 mg dose:**  
To prepare the solution, withdraw 1 mL of VYEPTI from each of 3 single-dose vials using a sterile needle and syringe. Inject the resulting 3 mL content into a 100 mL bag of 0.9% Sodium Chloride Injection, USP.

Storage and Handling of Diluted Product  
Gently invert the VYEPTI solution to mix completely. Do not shake. Following dilution, VYEPTI solution must be infused within 8 hours. During this time, VYEPTI solution should be stored at room temperature, 20°C to 25°C (68°F to 77°F). Do not freeze.

**2.3 Infusion Administration Instructions**  
Parenteral drug products should be inspected visually for particulate matter and discoloration prior to administration, whenever solution and container permit. Do not use if the liquid contains visible particulate matter or is cloudy or discolored [see Dosage Forms and Strengths (3)].

No other medications should be administered through the infusion set or mixed with VYEPTI. VYEPTI is for intravenous infusion only; infuse over approximately 30 minutes. Do not administer VYEPTI as an intravenous push or bolus injection. Use an intravenous infusion set with a 0.2 micron or 0.22 micron in-line or add-on sterile filter. After the infusion is complete, flush the line with 20 mL of 0.9% Sodium Chloride Injection, USP.

**3 DOSAGE FORMS AND STRENGTHS**  
VYEPTI is a clear to slightly opalescent, colorless to brownish-yellow solution available as follows:

- Injection: 100 mg/mL in a single-dose vial

**4 CONTRAINDICATIONS**  
VYEPTI is contraindicated in patients with serious hypersensitivity to eptinezumab-ijmr or to any of the excipients in VYEPTI. Reactions have included anaphylaxis and angioedema [see Warnings and Precautions (5.1)].

**5 WARNINGS AND PRECAUTIONS**  
**5.1 Hypersensitivity Reactions**  
Hypersensitivity reactions, including angioedema, urticaria, facial flushing, and rash, have occurred with VYEPTI in clinical trials. Most hypersensitivity reactions occurred during infusion and were not serious, but often led to discontinuation or required treatment. Serious hypersensitivity reactions may occur. Cases of anaphylaxis have been reported in the postmarketing setting. If a hypersensitivity reaction occurs, consider discontinuing VYEPTI, and institute appropriate therapy [see Contraindications (4) and Patient Counseling Information (17)].

**6 ADVERSE REACTIONS**  
The following clinically significant adverse reactions are described elsewhere in the labeling:

- Hypersensitivity Reactions [see Warnings and Precautions (5.1)].

**6.1 Clinical Trials Experience**  
Because clinical trials are conducted under widely varying conditions, adverse reaction rates observed in the clinical trials of a drug cannot be directly compared to rates in the clinical trials of another drug and may not reflect the rates observed in clinical practice.

The safety of VYEPTI was evaluated in 2076 patients with migraine who received at least one dose of VYEPTI, representing 1615 patient-years of exposure; of these, 1524 patients were exposed to 100 mg or 300 mg. Across all doses, 1872 patients were exposed for at least 6 months and 991 patients were exposed for 12 months. In the placebo-controlled clinical studies (Study 1 and Study 2) of 1372 patients, 579 patients received at least one dose of VYEPTI 100 mg, 574 patients received at least one dose of VYEPTI 300 mg, and 588 patients received placebo [see Clinical Studies (14)]. Approximately 86% were female, 89% were white, and the mean age was 40.4 years at study entry.

The most common (incidence at least 2% and at least 2% greater than placebo) adverse reactions in the clinical trials for the preventive treatment of migraine were nasopharyngitis and hypersensitivity.

Table 1 summarizes the adverse reactions that occurred during Study 1 and Study 2.

**Table 1. Adverse Reactions Occurring with an Incidence of at Least 2% for VYEPTI and at Least 2% Greater than Placebo in Studies 1 and 2**

Adverse Reactions	VYEPTI 100 mg N=579 %	VYEPTI 300 mg N=574 %	Placebo N=588 %
Nasopharyngitis	6	8	6
Hypersensitivity reactions*	1	2	0

\*Hypersensitivity reactions includes multiple related adverse event terms, such as hypersensitivity, pruritus, and flushing/hot flush that occurred on the day of dosing.



In Study 1 and Study 2, 1.9% of patients treated with VYEPTI discontinued treatment because of adverse reactions [see *Warnings and Precautions* (5.1)].

## 6.2 Immunogenicity

As with all therapeutic proteins, there is potential for immunogenicity. The detection of antibody formation is highly dependent on the sensitivity and specificity of the assay. Additionally, the observed incidence of antibody (including neutralizing antibody) positivity in an assay may be influenced by several factors, including assay methodology, sample handling, timing of sample collection, concomitant medications, and underlying disease. For these reasons, comparison of the incidence of antibodies to eptinezumab-jjmr in the studies described below with the incidence of antibodies in other studies or to other products may be misleading.

In patients receiving VYEPTI 100 mg or 300 mg every 3 months, the incidence of anti-eptinezumab-jjmr antibody development in Study 1 (up to 56 weeks) was 20.6% (92/447), and 41.3% (38/92) of those patients developed anti-eptinezumab-jjmr neutralizing antibodies. In Study 2 (up to 32 weeks), the incidence of anti-eptinezumab-jjmr antibody development was 18.3% (129/706), and 34.9% (45/129) of those patients developed anti-eptinezumab-jjmr neutralizing antibodies. In an open-label study with 84 weeks of treatment, 18% (23/128) of patients developed anti-eptinezumab-jjmr antibodies, and 39% (9/23) of those patients developed anti-eptinezumab-jjmr neutralizing antibodies.

Although the results from both studies showed no clear evidence of an impact from development of anti-eptinezumab-jjmr antibodies, including neutralizing antibodies, on the safety and efficacy profiles of VYEPTI, the available data are too limited to make definitive conclusions.

## 6.3 Postmarketing Experience

The following adverse reactions have been identified during postapproval use of VYEPTI. Because these reactions are reported voluntarily from a population of uncertain size, it is not always possible to reliably estimate their frequency or establish a causal relationship to drug exposure.

*Immune System Disorders* - Anaphylaxis [see *Contraindications* (4) and *Warnings and Precautions* (5.1)].

## 8 USE IN SPECIFIC POPULATIONS

### 8.1 Pregnancy

#### Risk Summary

There are no adequate data on developmental risks associated with the use of VYEPTI in pregnant women.

No adverse developmental effects were observed following administration of eptinezumab-jjmr to pregnant animals at doses greater than those used clinically [see *Data*].

In the U.S. general population, the estimated background risk of major birth defects and miscarriages in clinically recognized pregnancies is 2%-4% and 15%-20%, respectively. The estimated rate of major birth defects (2.2%-2.9%) and miscarriage (17%) among deliveries to women with migraine are similar to rates reported in women without migraine.

#### Clinical Considerations

##### Disease-Associated Maternal and/or Embryo/Fetal Risk

Published data have suggested that women with migraine may be at increased risk of preeclampsia and gestational hypertension during pregnancy.

#### Data

##### Animal Data

When eptinezumab-jjmr (0, 75, or 150 mg/kg) was administered weekly to female rats and rabbits by intravenous injection throughout organogenesis, no adverse effects on embryofetal development were observed. The higher dose tested (150 mg/kg) is 30 times the maximum recommended human dose (MRHD) of 300 mg, on a body weight basis (mg/kg).

When eptinezumab-jjmr (0, 75, or 150 mg/kg) was administered weekly to female rats throughout pregnancy and lactation, no adverse effects on pre- and postnatal development were observed. The higher dose tested (150 mg/kg) is 30 times the MRHD, on a mg/kg basis.

## 8.2 Lactation

#### Risk Summary

There are no data on the presence of eptinezumab-jjmr in human milk, the effects on the breastfed infant, or the effects on milk production. The developmental and health benefits of breastfeeding should be considered along with the mother's clinical need for VYEPTI and any potential adverse effects on the breastfed infant from VYEPTI or from the underlying maternal condition.

## 8.4 Pediatric Use

Safety and effectiveness in pediatric patients have not been established.

## 8.5 Geriatric Use

Clinical studies of VYEPTI did not include sufficient numbers of patients aged 65 and over to determine whether they respond differently from younger patients.

## 11 DESCRIPTION

Eptinezumab-jjmr is a humanized immunoglobulin G1 (IgG1) monoclonal antibody specific for calcitonin gene-related peptide (CGRP) ligand. Eptinezumab-jjmr has an approximate molecular weight of 143 kD. Eptinezumab-jjmr is produced in *Pichia pastoris* yeast cells by recombinant DNA technology.

VYEPTI (eptinezumab-jjmr) injection is a sterile, preservative-free, clear to slightly opalescent, colorless to brownish-yellow solution, for intravenous infusion. VYEPTI is supplied as a 100 mg/mL single-dose vial. Each mL contains 100 mg eptinezumab-jjmr formulated in L-histidine (1 mg), L-histidine hydrochloride monohydrate (2.8 mg), polysorbate 80 (0.15 mg), sorbitol (40.5 mg), and Water for Injection, USP, at a pH of 5.8.

## 12 CLINICAL PHARMACOLOGY

### 12.1 Mechanism of Action

Eptinezumab-jjmr is a humanized monoclonal antibody that binds to calcitonin gene-related peptide (CGRP) ligand and blocks its binding to the receptor.

### 12.2 Pharmacodynamics

The relationship between the pharmacodynamic activity and the mechanism(s) by which eptinezumab-jjmr exerts its clinical effects is unknown.

### 12.3 Pharmacokinetics

Eptinezumab-jjmr exhibits linear pharmacokinetics and exposure increases proportionally with doses from 100 mg to 300 mg after intravenous administration. Steady-state plasma concentration is attained after the first dose with a once every 3-month dosing schedule.

#### Distribution

The central volume of distribution (V<sub>c</sub>) for eptinezumab-jjmr is approximately 3.7 liters.

#### Metabolism & Elimination

Eptinezumab-jjmr is expected to be degraded by proteolytic enzymes into small peptides and amino acids.

The apparent clearance of eptinezumab-jjmr was 0.006 L/h, and the terminal elimination half-life was approximately 27 days.

#### Specific Populations

A population pharmacokinetic analysis assessing the effects of age, race, sex, and body weight did not suggest any clinically significant impact of these covariates on eptinezumab exposures.

#### Patients with Renal or Hepatic Impairment

No dedicated studies were conducted to assess the effects of renal or hepatic impairment on the pharmacokinetics of eptinezumab-jjmr. However, hepatic or renal impairment is not expected to affect the pharmacokinetics of eptinezumab-jjmr. A population pharmacokinetic analysis of integrated data from eptinezumab-jjmr clinical studies did not reveal clinically significant impact on pharmacokinetics of patients with hepatic or renal impairment.

#### Drug Interaction Studies

##### P450 Enzymes

Eptinezumab-jjmr is not metabolized by cytochrome P450 enzymes; therefore, interactions with concomitant medications that are substrates, inducers, or inhibitors of cytochrome P450 enzymes are unlikely.

##### Sumatriptan

The co-administration of a single dose of 300 mg eptinezumab-jjmr administered as an intravenous infusion (over a period of 1 hour ± 15 min) with a single dose of 6 mg sumatriptan administered subcutaneously did not significantly influence the pharmacokinetics of eptinezumab-jjmr or sumatriptan.

## 13 NONCLINICAL TOXICOLOGY

### 13.1 Carcinogenesis, Mutagenesis, Impairment of Fertility

#### Carcinogenesis

The carcinogenic potential of eptinezumab-jjmr has not been assessed.

#### Mutagenesis

Genetic toxicology studies of eptinezumab-jjmr have not been conducted.

#### Impairment of Fertility

When eptinezumab-jjmr (0, 75, or 150 mg/kg) was administered weekly by intravenous injection to male and female rats prior to and during mating and continuing in females to gestation day 3-4, no adverse effects on fertility were observed. The higher dose tested (150 mg/kg) is 30 times the maximum recommended human dose of 300 mg, on a body weight basis (mg/kg).

## 14 CLINICAL STUDIES

The efficacy of VYEPTI was evaluated as a preventive treatment of episodic and chronic migraine in two randomized, multicenter, placebo-controlled studies, both with 6-month double-blind periods: one study in patients with episodic migraine (Study 1) and one study in patients with chronic migraine (Study 2). VYEPTI was administered by intravenous infusion every 3 months in both studies; however, the primary endpoint was measured at 12 weeks.

#### Study 1: Episodic Migraine

Study 1 (NCT02559895) included adults with a history of episodic migraine (4 to 14 headache days per month, of which at least 4 were migraine days). A total of 665 patients were randomized to receive placebo (N=222), 100 mg VYEPTI (N=221), or 300 mg VYEPTI (N=222) every 3 months for 12 months. Patients were allowed to use concurrent acute migraine or headache medications, including migraine-specific medications (i.e., triptans, ergotamine derivatives), during the trial.

The study excluded patients with a history of cardiovascular disease (hypertension, ischemic heart disease), neurological disease, or cerebrovascular disease.

The primary efficacy endpoint was the change from baseline in mean monthly migraine days over Months 1-3. Secondary endpoints included the percentages of patients with 50% or greater, and 75% or greater reductions from baseline in monthly migraine days over Months 1-3.

Patients had a median age of 39 years (range: 18 to 71 years), 84% were female, and 84% were white. The mean migraine frequency at baseline was approximately 8.6 migraine days per month and was similar across treatment groups.

VYEPTI treatment demonstrated statistically significant improvements compared to placebo for the primary efficacy endpoint, as shown in Table 2; secondary endpoints are also summarized in Table 2.

Table 2. Efficacy Endpoint Results in Study 1

	VYEPTI 100 mg N=221	VYEPTI 300 mg N=222	Placebo N=222
<b>Monthly Migraine Days (MMD) – Months 1-3</b>			
Change from baseline	-3.9	-4.3	-3.2
Difference from placebo	-0.7	-1.1	
p-value	0.018	<0.001	
<b>≥50% MMD responders – Months 1-3</b>			
% Responders	49.8%	56.3%	37.4%
Difference from placebo	12.4%	18.9%	
p-value	0.009*	<0.001	
<b>≥75% MMD responders – Months 1-3</b>			
% Responders	22.2%	29.7%	16.2%
Difference from placebo	6.0%	13.5%	
p-value	NS**	<0.001	

\*Nominal statistical significance  
\*\*NS = Not statistically significant

Figure 1 shows the mean change from baseline in average monthly migraine days in Study 1. Patients treated with VYEPTI at both doses had greater mean decreases from baseline in mean monthly migraine days over Months 1-3 compared to placebo-treated patients.

Figure 1. Change from Baseline in Monthly Migraine Days in Study 1

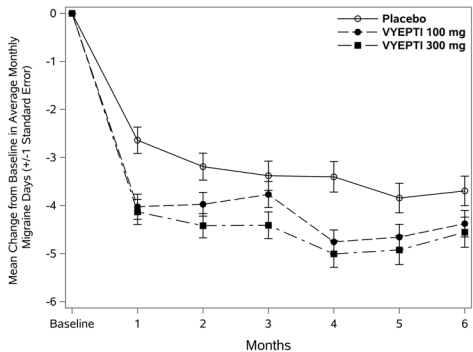


Figure 2 shows the distribution of change from baseline in mean monthly migraine days through Month 3 by treatment group in 2-day increments.

Figure 2. Distribution of Change from Baseline in Mean Monthly Migraine Days over Months 1 to 3 by Treatment Group in Study 1

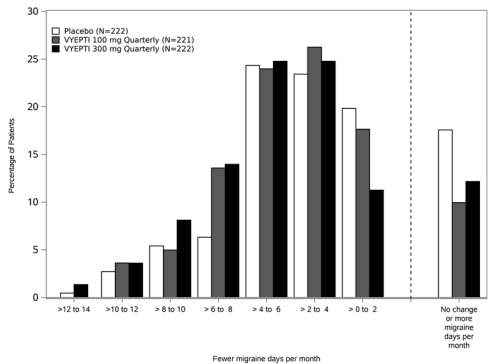
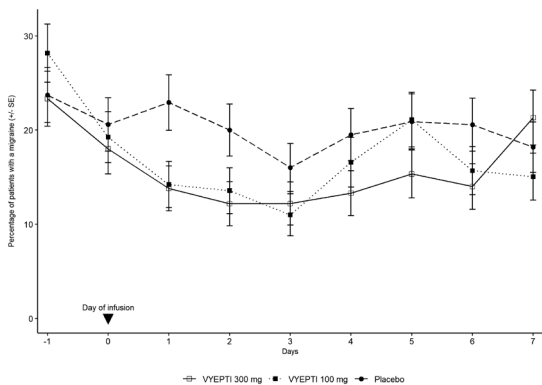


Figure 3 demonstrates that greater percentages of placebo-treated patients had migraines on most days during the first 7 days of treatment compared to VYEPTI-treated patients in Study 1.

Figure 3. Percentage of Patients with a Migraine from Day -1 (Day Prior to Infusion) to Day 7 in Study 1



Study 2: Chronic Migraine

Study 2 (NCT02974153) included adults with a history of chronic migraine (15 to 26 headache days per month, of which at least 8 were migraine days). A total of 1072 patients were randomized and received placebo (N=366), 100 mg VYEPTI (N=356), or 300 mg VYEPTI (N=350) every 3 months for 6 months. Patients were allowed to use and to continue an established stable regimen of acute migraine or headache preventive medication (except onabotulinumtoxinA). Patients with a dual diagnosis of chronic migraine and medication overuse headache attributable to acute medication overuse (triptans, ergotamine, or combination analgesics greater than 10 days per month) were included in the study population. Patients using opioids or butalbital-containing products greater than 4 days per month were not allowed.

The study excluded patients with a history of cardiovascular disease (hypertension, ischemic heart disease), neurological disease, or cerebrovascular disease.

The primary efficacy endpoint was the change from baseline in mean monthly migraine days over Months 1-3. Secondary endpoints included the percentages of patients with 50% or greater and 75% or greater reductions from baseline in monthly migraine days over Months 1-3.

Patients had a median age of 41 years (range: 18 to 65 years), 88% were female, and 91% were white. Forty-one percent of patients were taking concomitant preventive medication for migraine. The mean migraine frequency at baseline was approximately 16.1 migraine days per month and was similar across treatment groups.

VYEPTI treatment demonstrated statistically significant improvements compared to placebo for the primary efficacy endpoint, as shown in Table 3; secondary endpoints are also summarized in Table 3.

Table 3. Efficacy Endpoint Results in Study 2

	VYEPTI 100 mg N=356	VYEPTI 300 mg N=350	Placebo N=366
<b>Monthly Migraine Days (MMD) – Months 1-3</b>			
Change from baseline	-7.7	-8.2	-5.6
Difference from placebo	-2.0	-2.6	
p-value	<0.001	<0.001	
<b>≥50% MMD responders – Months 1-3</b>			
% Responders	57.6%	61.4%	39.3%
Difference from placebo	18.2%	22.1%	
p-value	<0.001	<0.001	
<b>≥75% MMD responders – Months 1-3</b>			
% Responders	26.7%	33.1%	15.0%
Difference from placebo	11.7%	18.1%	
p-value	<0.001	<0.001	

Figure 4 shows the mean change from baseline in average monthly migraine days for Study 2. Patients treated with VYEPTI at both doses had greater mean decreases from baseline in mean monthly migraine days over Month 1-3 compared to placebo-treated patients.

Figure 4. Change from Baseline in Monthly Migraine Days in Study 2

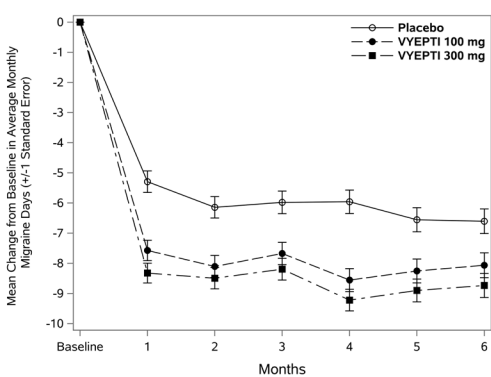




Figure 5 shows the distribution of change from baseline in mean monthly migraine days through Month 3 by treatment group in 3-day increments.

**Figure 5. Distribution of Change from Baseline in Mean Monthly Migraine Days over Months 1-3 by Treatment Group in Study 2**

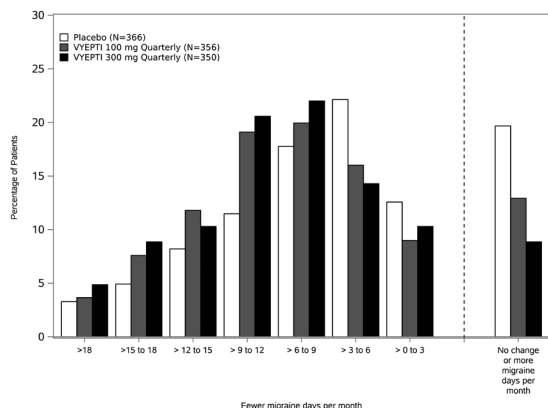
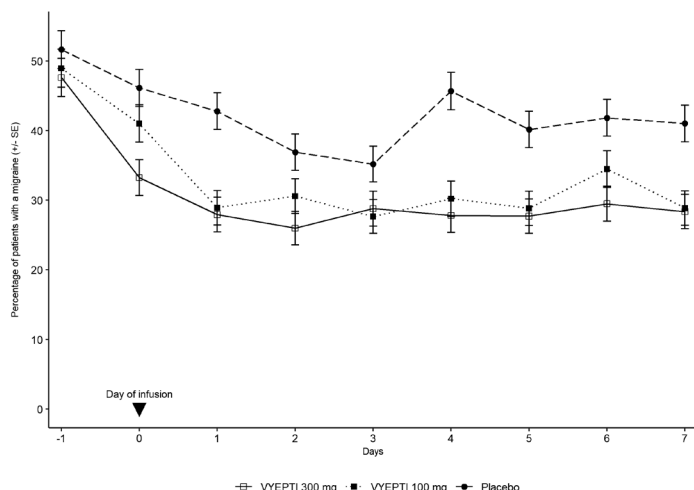


Figure 6 demonstrates that greater percentages of placebo-treated patients had migraines on individual days during the first 7 days of treatment compared to VYEPTI-treated patients in Study 2.

**Figure 6. Percentage of Patients with a Migraine from Day -1 (Day Prior to Infusion) to Day 7 in Study 2**



## 16 HOW SUPPLIED/STORAGE AND HANDLING

### 16.1 How Supplied

VYEPTI (eptinezumab-jjmr) injection is a clear to slightly opalescent, colorless to brownish-yellow solution supplied as:

Carton containing one 100 mg/mL single-dose vial - NDC 67386-130-51.

### 16.2 Storage and Handling

Store refrigerated at 2°C to 8°C (36°F to 46°F) in the original carton to protect from light until time of use. Do not freeze or shake.

The vial stopper is not made with natural rubber latex.

## 17 PATIENT COUNSELING INFORMATION

Advise the patient to read the FDA-approved patient labeling (Patient Information).

### Hypersensitivity Reactions

Inform patients about the signs and symptoms of hypersensitivity reactions and that these reactions can occur with VYEPTI. Advise patients to contact their healthcare provider immediately if signs or symptoms of hypersensitivity reactions occur [see *Warnings and Precautions* (5.1)].

### Pregnancy

Advise patients to notify their healthcare provider if they become pregnant during treatment or plan to become pregnant [see *Use in Specific Populations* (8.1)].

### Lactation

Inform patients to notify their healthcare provider if they are breastfeeding or plan to breastfeed [see *Use in Specific Populations* (8.2)].

### Manufactured by:

Lundbeck Seattle BioPharmaceuticals, Inc.  
11804 North Creek Parkway South  
Bothell, WA 98011 USA  
U.S. License No. 2097



Vyepti is a registered trademark of Lundbeck Seattle BioPharmaceuticals, Inc. EPT-L-100009

## PATIENT INFORMATION

VYEPTI® (vye ep' tee)  
(eptinezumab-jjmr)  
injection, for intravenous use

### What is VYEPTI?

VYEPTI is a prescription medicine used for the preventive treatment of migraine in adults.

It is not known if VYEPTI is safe and effective in children.

**Do not receive VYEPTI** if you are allergic to eptinezumab-jjmr or any of the ingredients in VYEPTI. See the end of this Patient Information leaflet for a complete list of ingredients in VYEPTI.

**Before you receive VYEPTI, tell your healthcare provider about all of your medical conditions, including if you:**

- are pregnant or plan to become pregnant. It is not known if VYEPTI will harm your unborn baby.
- are breastfeeding or plan to breastfeed. It is not known if VYEPTI passes into your breast milk. Talk to your healthcare provider about the best way to feed your baby while using VYEPTI.

**Tell your healthcare provider about all the medicines you take,** including prescription and over-the-counter medicines, vitamins, and herbal supplements.

### How will I receive VYEPTI?

- VYEPTI will be given by a healthcare provider in a healthcare setting.
- VYEPTI is given by intravenous (IV) infusion in your vein.
- VYEPTI will be given over 30 minutes every 3 months.

If you have questions about your infusion schedule, ask your healthcare provider.

### What are the possible side effects of VYEPTI?

**VYEPTI may cause serious side effects, including:**

- **Allergic reactions.** Allergic reactions can happen after receiving VYEPTI. Call your healthcare provider or get emergency medical help right away if you have any of the following symptoms of an allergic reaction:
  - rash
  - swelling of your face, lips, tongue or throat
  - trouble breathing
  - hives
  - redness in your face

### The most common side effects of VYEPTI include:

- stuffy nose and scratchy throat
- allergic reactions

These are not all of the possible side effects of VYEPTI.

Call your doctor for medical advice about side effects. You may report side effects to FDA at 1-800-FDA-1088.

### General information about the safe and effective use of VYEPTI.

Medicines are sometimes prescribed for purposes other than those listed in the Patient Information leaflet.

You can ask your pharmacist or healthcare provider for information about VYEPTI that is written for health professionals.

### What are the ingredients in VYEPTI?

**Active ingredient:** eptinezumab-jjmr

**Inactive ingredients:** L-histidine, L-histidine hydrochloride monohydrate, polysorbate 80, sorbitol, and Water for Injection.

The vial stopper is not made with natural rubber latex.

**Manufactured by:** Lundbeck Seattle BioPharmaceuticals, Inc., 11804 North Creek Parkway South, Bothell, WA 98011

US License Number: 2097

Vyepti is a registered trademark of Lundbeck Seattle BioPharmaceuticals, Inc.

For more information, call 1-833-4-VYEPTI (833-489-3784) or go to [www.Vyepti.com](http://www.Vyepti.com).



This Patient Information has been approved by the U.S. Food and Drug Administration.

Revised: 09/2021